

WINDSTATISTIC

GDR

Mai 10

	1	2	3	4	5	6	7	8	9	10	11	12	13	14	15	16	17	18	19	20	21	22	23	24	25	26	27	28	29	30	31
Windforce in BFT	3	3	10	2	4	3	4	4	8	4	4	2	2	5	7	6	5	4	8	5	4	3	5	6	6	4	4	2	3	3	3
Windforce in KNTS	10	10	50	5	15	8	16	12	35	15	12	5	5	20	28	22	20	14	40	20	14	7	22	23	27	12	16	5	8	8	10
Temperature celcius	12	17	10	12	16	14	18	20	20	21	23	19	14	20	23	23	22	23	22	23	24	25	24	27	28	25	26	26	27	26	26
	W			S			SE	SE	N			N	N	N	N	SE	N	N	SE	SE	SE	S	SW	SE	NE	E					

Average force in BFT of the month:
4,4 BFT

Days min. 4 max 5 bft:
13 days
41,94 %

Days min 6 max .. bft:
7 days
22,58 %

Total days:
20

Total %:
64,52

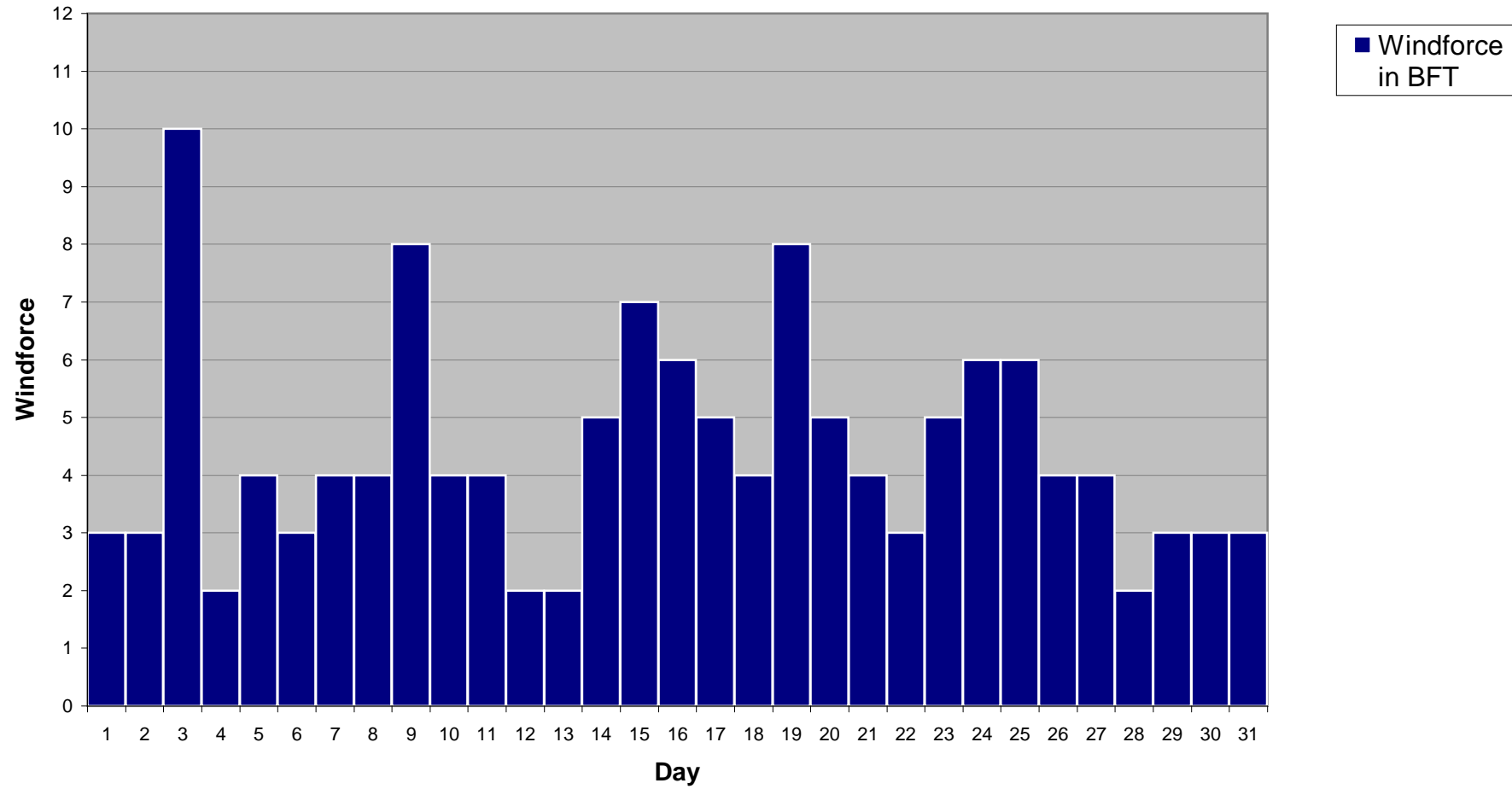
Average force of the month:
16,6 KNTS

Total days min 9KNTS / 3BFT:
23

Total %:
74,19

05.01.2011

Windstatistic



Windstatistic

